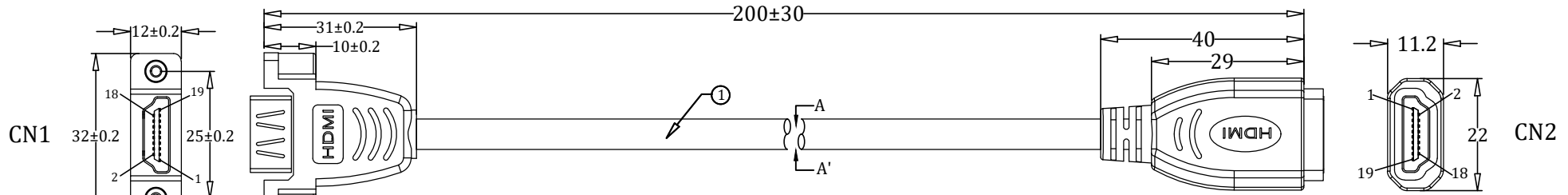


All materials compliant with RoHS, REACH standards

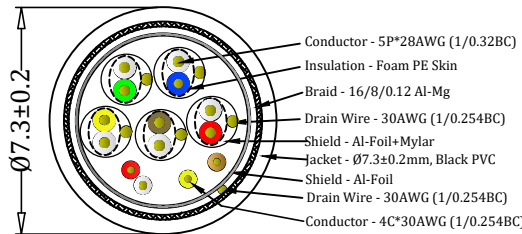
REV.	DATE	DESCRIPTION
A0	2023.7.26	ISSUE



PIN OUT

CN1	WIRE COLOR	CN2
TMDS 2+	1 White	1 TMDS 2+
TMDS 2-	3 Red	3 TMDS 2-
TMDS 1- Shield	5 Drain	5 TMDS 1- Shield
TMDS 1+	4 White	4 TMDS 1+
TMDS 1-	6 Brown	6 TMDS 1-
TMDS 2- Shield	2 Drain	2 TMDS 2- Shield
TMDS 0+	7 White	7 TMDS 0+
TMDS 0-	9 Green	9 TMDS 0-
TMDS LOCK Shield	11 Drain	11 TMDS LOCK Shield
TMDS CLOCK+	10 White	10 TMDS CLOCK+
TMDS CLOCK-	12 Blue	12 TMDS CLOCK-
TMDS 0- Shield	8 Drain	8 TMDS 0- Shield
CEC	13 White	13 CEC
Utility	14 White	14 Utility
Hot Plug Detect	19 Yellow	19 Hot Plug Detect
DDC/CEC Ground	17 Drain	17 DDC/CEC Ground
SCL	15 Yellow	15 SCL
SDA	16 Orange	16 SDA
+5V Power	18 Red	18 +5V Power
Shell	Braid+DW	Shell

SEC:A--A'

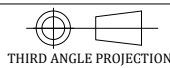


Electronic Tests:

- A. Open/Short/Intermittence: 100%
- B. Hi-Pot: AC 300V 0.01S
- C. Insulation Resistance: DC 300V 5MΩ
- D. Conductive Resistance: 3Ω Max
- E. Computer Test: 4K@60Hz

NO.	NAME	SPECIFICATIONS	Q'TY	UNIT
7	Screw	Screw, M3, Nickel Plated	2	PCS
6	NUT	M3, Copper Nut	2	PCS
5	Outer Mold	45P PVC, Black	15	G
4	Inner Mold	LDPE/Natural	2	G
3	Connector	HDMI 19PIN Female Pin Gold Plated,Shell Gold Flash,Black Insulation	1	PCS
2	Connector	HDMI 19PIN Female Pin Gold Plated,Shell Gold Flash, Black Insulation, Black ABS HOOD	1	set
1	Cable	HDMI2.0 [(1/0.32BC)*1P+D(1/0.254BC)+AM]*5+(1/0.254BC)*4C+AL-FOIL+DRAIN WIRE+(1/0.254BC)+BRAID(128/0.12AM)BLACK PVC JACKET,OD:7.3±0.2MM	0.2	M

NINGBO FARSINCE ELECTRONIC CO., LTD
 T: +86 574 87042335 E: sales@farsince.com W: www.farsince.com



-TOLERANCES-
 LENGTH:
 X±0.3
 .X±0.2
 .XX±0.1
 ANGLE:
 X°±2°
 .X°±1°
 .XX°±0.5°

Customer	
Model No.	
Drawing No.	FSP1000A-4K
Product Description	4K HDMI 2.0 F/F Panel Mount Cable
Units:mm	Approved: Franck
	Check: Sam
Page: 1 of 1	Design: Bill